

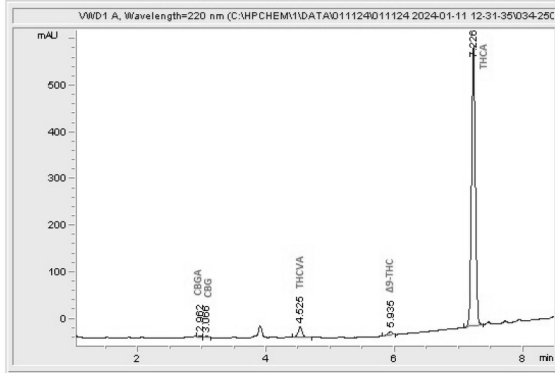
**Sample 656-011124-102**  
Gorilla Skunk 2.0

Sample Submitted: 01-11-2024; Report Date: 01-19-2024

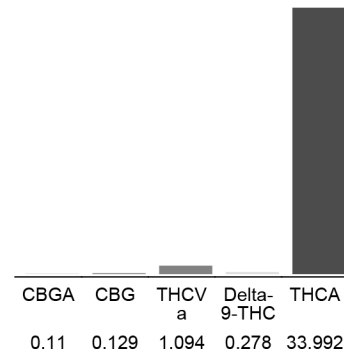
# Gorilla Skunk 2.0

Plant Material: Infused Flower

## Chromatogram



## Cannabinoid Profile



## Cannabinoid Profile by HPLC

**0.28%**  
Delta-9-THC

**0.00%**  
CBD

**35.60%**  
Total Cannabinoids

Cannabinoid	% wt	mg/g
CBGA	0.11	1.1
CBG	0.129	1.29
THCVa	1.094	10.94
Delta-9-THC	0.278	2.78
THCA	33.99	339.92
<b>Total Cannabinoids</b>	<b>35.60</b>	<b>356.0</b>
<b>Calculated Total THC</b>	<b>30.09</b>	<b>300.89</b>
<b>Calculated CBD Yield</b>	<b>0.00</b>	<b>0.00</b>

Calculated Total THC = Delta-9-THC + 0.877 \* THCA

Calculated Maximum CBD Yield = CBD + 0.877 \* CBDA

**Marin Analytics, LLC**

250 Bel Marin Keys Blvd, Suite D4  
Novato, CA 94949

833-321-TEST / info@marinanalytics.com

**Mike Clemmons**  
Lab Manager